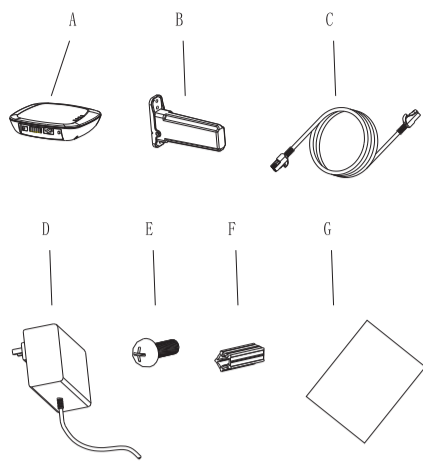


Step1. Unpacking

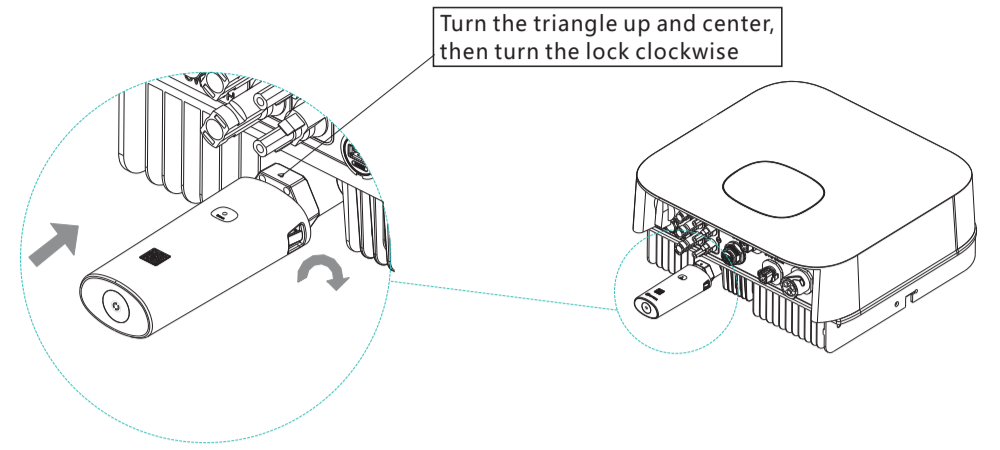
Unpack the box and take out ShineLanBox, ShineRFStick-X and other accessories, list as following



Item	Name	Quantity
A	ShineLanBox	1
B	ShineRFStick-X	1
C	Network cable	1
D	Power adapter	1
E	Fixing screws	4
F	Wall plastic posts	2
G	User manual	1

Step2. Electrical connection

1. Rotate the USB cover of the photovoltaic device counterclockwise
2. Rotate the datalogger locker on the upper, make sure the triangle is on the front side and in the middle.
3. Connect the datalogger to the inverter USB port, make sure the triangle is on the front side, press the locker and rotate clockwise until it is tighten.



Growatt ShineLink-X

Quick Installation Guideline

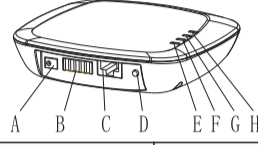
For more info, please download from <http://server.growatt.com>

T +86 755 2747 1942 F +86 755 2747 2131

E service@ginverter.com W www.growatt.com

C After the installation, if the LED light of ShineRFStick-X flash quickly, it means installation works. If the LED light is off, please recheck the connection between ShineRFStick and inverter.

2> ShineLanBox Electrical Connection



Item	Name	Description
A	Power input	Connect to the power adapter
B	RS 485	Reserved
C	RJ 45	Connect to the network
D	Key	Function key
E	Configuration LED	Configuration the device
F	Device LED	Device number connected
G	Network LED	Connecting the network
H	Power LED	Connecting the power

Connect ShineLanBox' s RJ45 port to the router, then plug in ShineLanBox with power adaptor.

After initialization of ShineLanBox, the power LED is on, the network LED is on and the device LED flashing frequently. The power LED is on means it connected to power supply, the network LED is on means ShineLanBox connected to internet, the flashing of Device LED means device works, the time of flashing means the number of RF.

ShineRFStick-x' s LED status	Status of the ShineRFStick-X
Always on	The ShineRFStick-X is initialing
Always off	Loose connection
Flashing quickly(every 0.2 second)	USB port find the inverter
Flasing slowly(every 1 second)	Connection works

ShineLanBox LED lights	Status of working condition
Power light	The light is on means power is on
Web light	Flashing means connect to router, on means connect to web
Device light	Time of frequently flashing means the number of device connect to ShineLanBox
Paired light	Flashing when pairing, go off if pairing successes

Step3. Use ShineLink-X

You can go to Google Store or App Store to find "Shinephone" or scan below QR code to install the software.

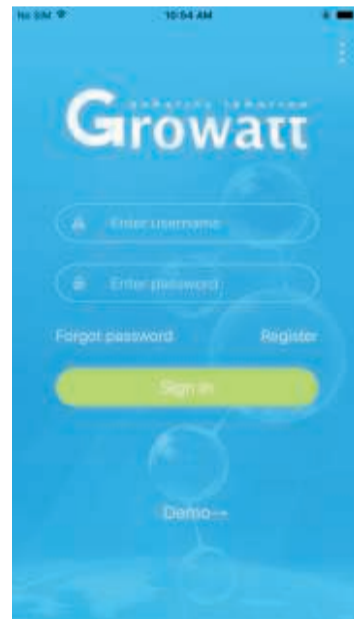
Note: 1. Make sure you install the newest version.

2. For more information please visit server.growatt.com.

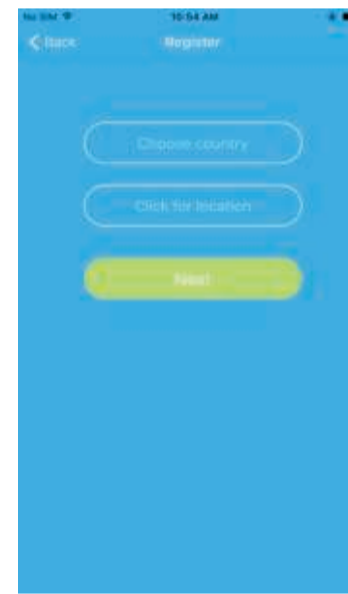


[Android&iOS]

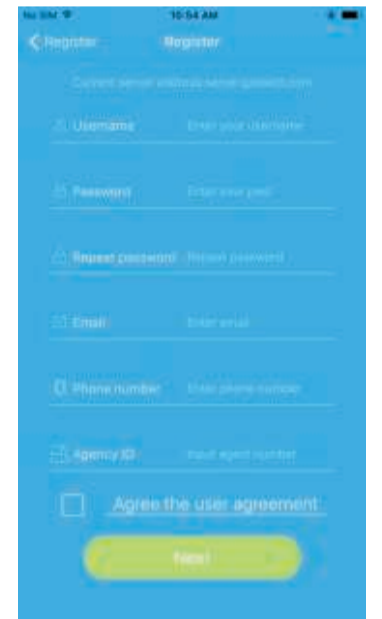
2. After installed ShinePhone App, get into log in, click the register and then go to the page county and city.



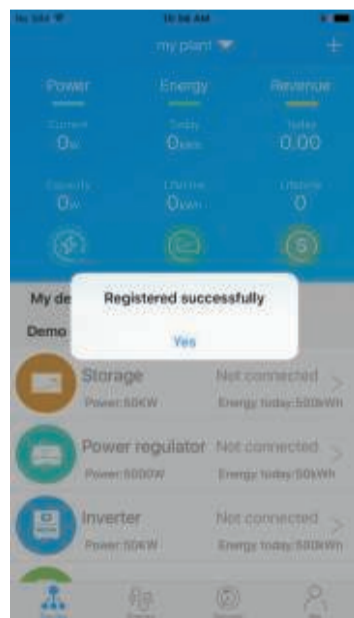
3. Based your location choose the country and city, please notice wrong input will lead to wrong uploading, click next to register page.



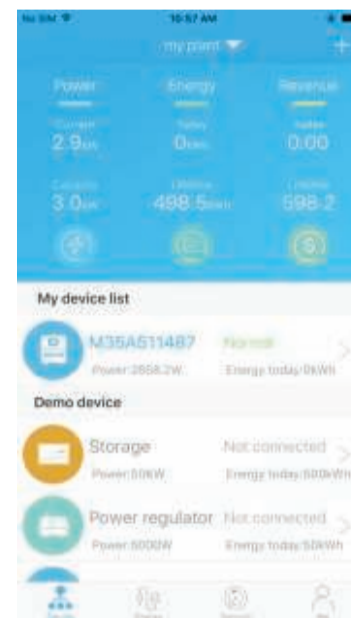
4. Fill in all the customer information and click next to go to add datalogger page



5. Scan or type in the bar code on the ShineLanBox, click register, then it will automatically switch to my plant page.

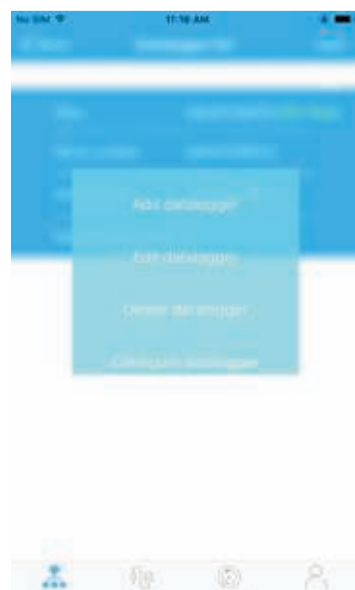
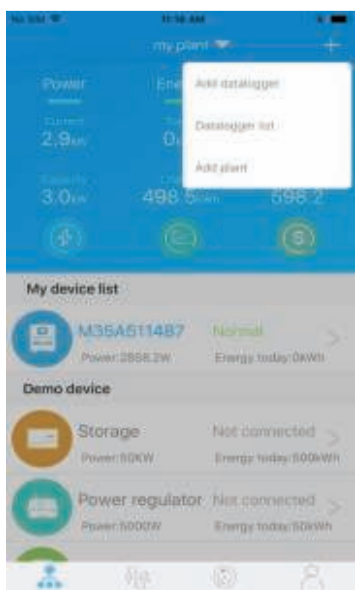


6. In my plant you can monitor all the devices to check solar device' s information



7. In my plant you can monitor all the devices to check solar device' s information

Note: after you successfully add the datalogger you can see the ShineLanBox' s conditions, if you can not find ShineLanBox please check the status of LED light to find out the trouble.:



Tips1 Add new ShineRFStick device

Note: Only after resetting ShineLanBox or add new ShineRFStick-X then you need pairing ShineLanBox and ShineRFStick-X, all the devices will be paired when manufactured.

Quick press ShineRFStick-X (in less than 2 seconds), then quickly press ShineLanBox' s button, you can enter pairing mode, at this point ShineLanBox' s pairing light is flashing, ShineRFStick-X' s Blue light flashing quickly, if pairing is successful, ShineLanBox' s pairing light is off, ShineRFStick-X' Blue web light change to slow flashing. (the light is on for one second, and off for a second.)

Note: The longest connection distance between ShineLanBox and ShineRFStick-X should be no more than 200 meters, if there is a wall between ShineLanBox and ShineRFStick-X the longest connection distance is 50 meters, if there are two walls between ShineLanBox and ShineRFStick-X the longest connection distance is 20 meters.

Tips2 Reset ShineLanBox

Purpose of resetting collector:

- (1) Erase all the pairing records
- (2) ShineLanBox IP changes to Automatic

Steps of resetting collector:

Press ShineLanBox button for more than 6 seconds, until all the four LED lights are on, then release the button, at this time all the setting had been erased. After resetting need repairing ShineLanBox and ShineRFStick-X, please refer to Tips1 above.