



Residential inverters



Tigo TS4-O



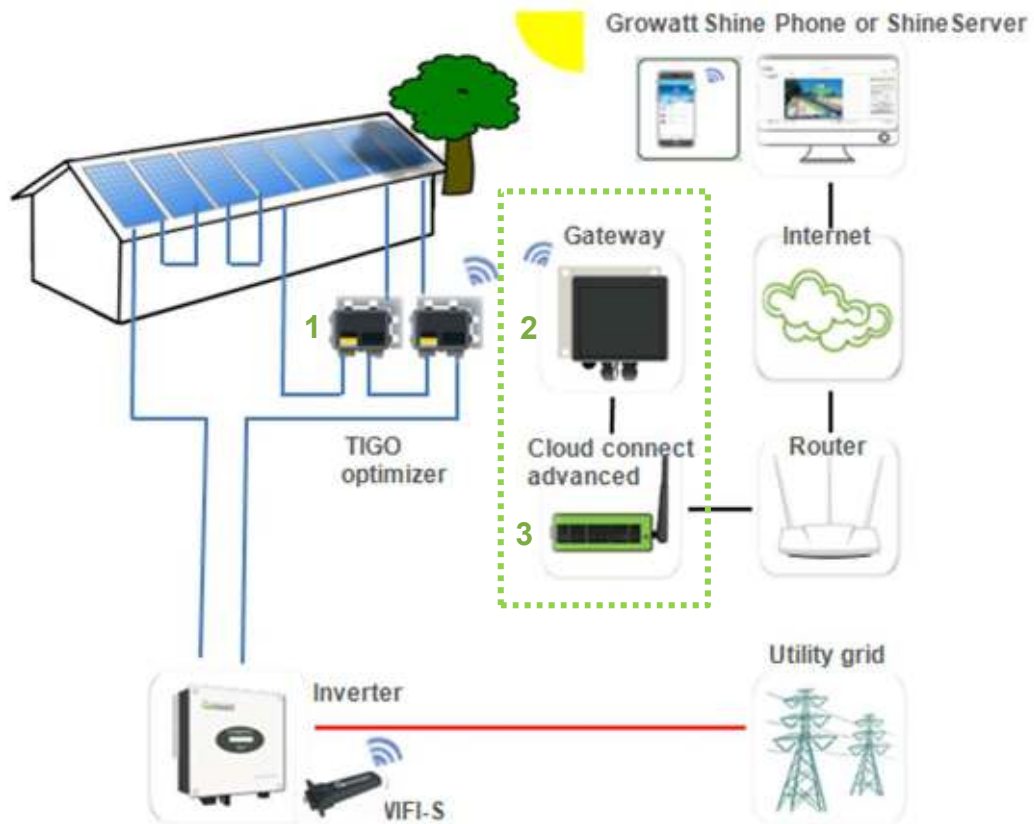
Inverters compatible with Tigo product

| Marketing Department

The list of inverters compatible with Tigo

MODE	TS4-O
MIN 2500-6000TL-XE	●
Growatt 750-3000-S	●
Growatt 25000-5500MTL-S	●
Growatt 3000-11000 TL3-S	●

System overview



1. TS4-O optimization device

2. Gateway/TAP: Communication with Tigo optimizer via WiFi and update data to CCA

3. CCA (cloud connect advanced): Communication Antenna that update Optimizer data to the database via internet

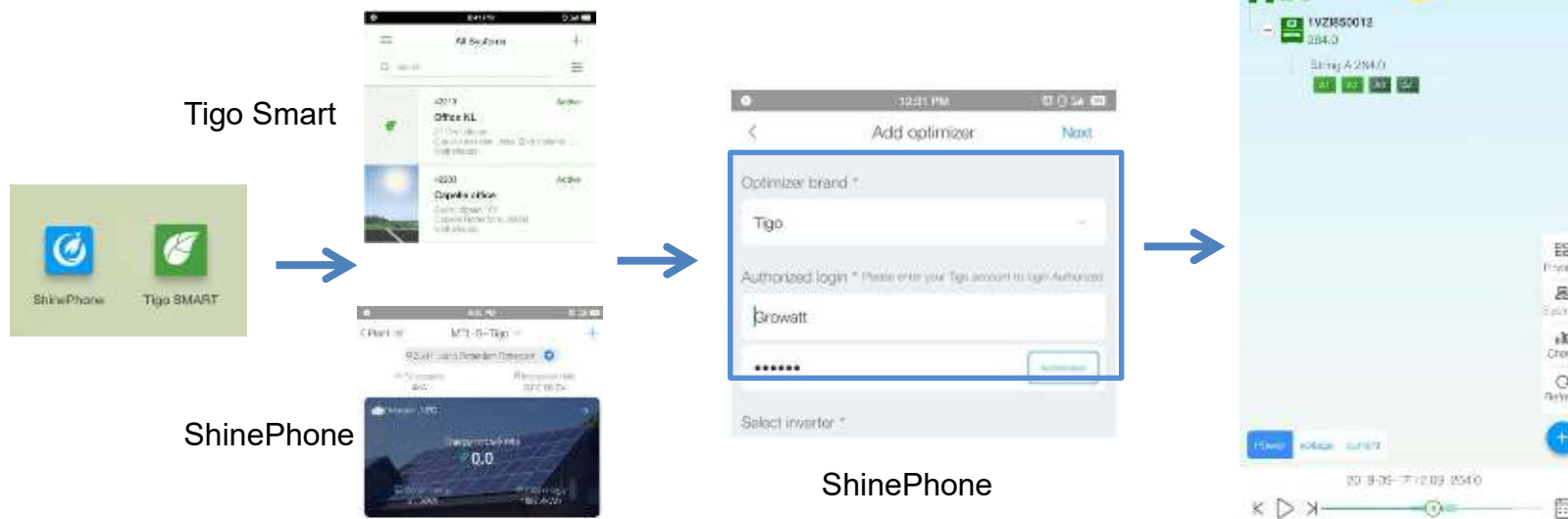
***There is CCA kit from Tigo, include CCA+TAP in one Box**

4. Growatt monitoring devices (ShineWiFi-S and ShineLink)

5. Growatt monitoring platform:
Show system information: Optimizer and inverter on one platform: Growatt ShineServer and ShinePhone (Get Tigo monitoring information via API)

Configuration and monitoring

1. Install Tigo devices (TS4-O, Gateway, Cloud connect advanced)
2. Down load Tigo Smart app, create a Premium account and to do the configuration of optimizers
3. Download ShienPhone app, create a account and configure the inverter monitroing
4. Add the Tigo Smart account to Growatt account





THANK YOU